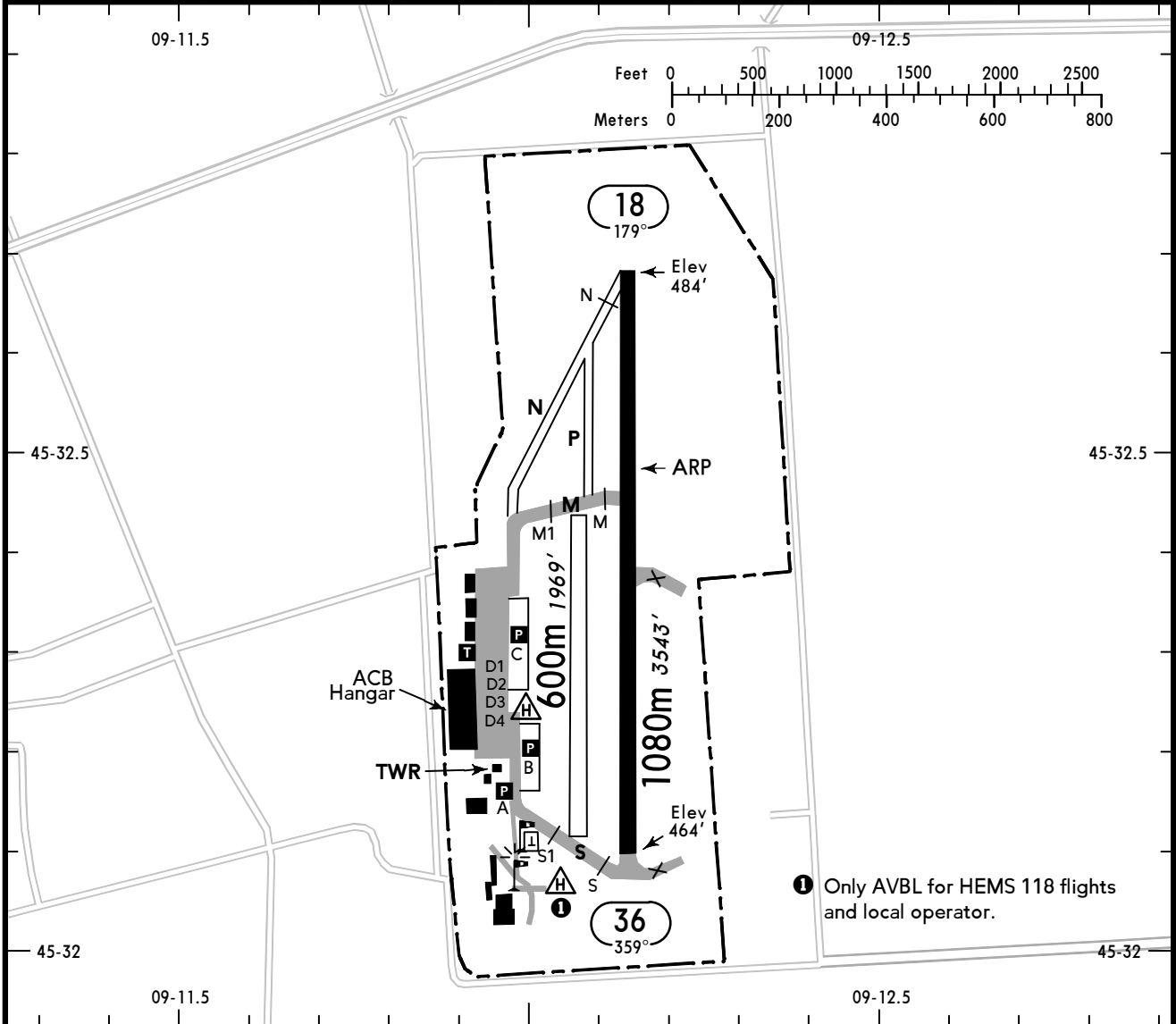


MILANO
BRESSO
ITALY

19-2 24 DEC 10



(FIS)
 MILANO INFORMATION **124.92**



① Only AVBL for HEMS 118 flights and local operator.

✂ 1 (O/R) 🍷 (O/R) ✂ (O/R) 🚗 (O/R) TAXI (O/R)

☞ WDI

RWY No	Dimension (m) - Surface	TORA (m)	LDA (m)	Strength	Lights
18 36	1080 x 30 Asphalt	1080	1080	5t SIWL	—
18 36	600 x 30 Grass	600	600	2t SIWL	—

NOTE: See also MILANO (Linate) 29-1 and MILANO 20-1V.
 Traffic circuits W of RWY and entry into the circuit is permitted from NW sector only.
HEL Operations
 For CIV HEL landing and TKOF on RWY 18/36 only.
 Simultaneous use of RWY 18/36 and HEMS HEL landing area is prohibited.